

Alternatives Public Meeting #2

August 9, 2016

2014 Bridge Condition



Concrete damage and crack on fender pile



Concrete damage and cracks on traffic railing



Internal corroded pile



Corroded bearing



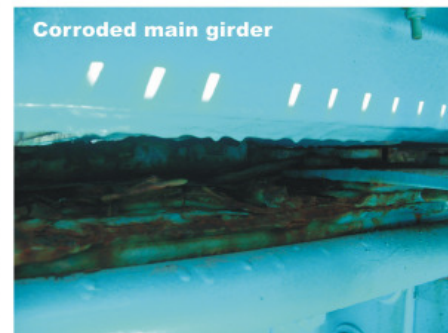
Cracks in deck



Concrete damage on pile cap with exposed corroded steel



Concrete damage on beam with exposed corroded tendon



Corroded main girder



Example of non crash-tested traffic railing (Anna Maria Bridge 3/2014)